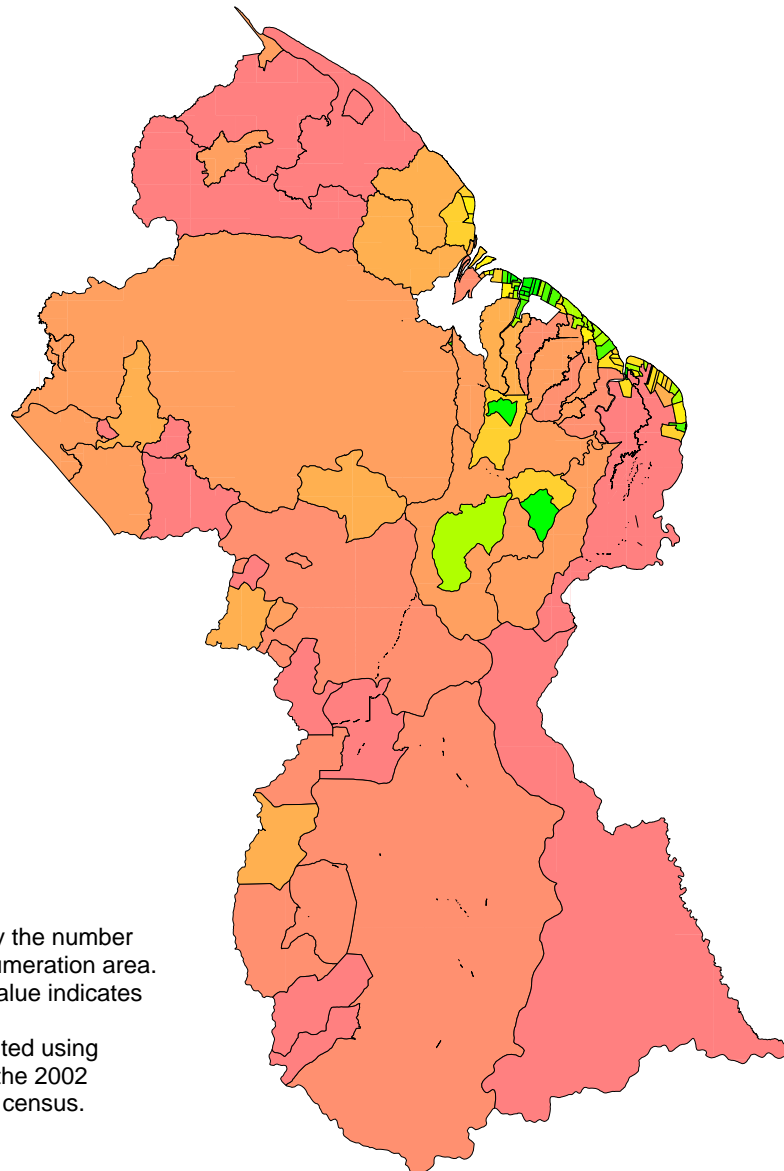


**BUREAU OF STATISTICS
POPULATION AND HOUSING CENSUS - 2002
MARGINALITY INDEX (POVERTY INDICATOR) BY NEIGHBOURHOOD
DEMOCRATIC COUNCIL (NDC)**



Marginality Index

2.42 to 3.5
1.99 to 2.42
1.32 to 1.99
0.75 to 1.32
0.42 to 0.75
0.29 to 0.42
0.15 to 0.29
0.01 to 0.15
-0.19 to 0.01
-1.21 to -0.19

Notes:

The index is weighted by the number of households in the enumeration area. High marginality index value indicates high level of poverty.

The indices were computed using selected variables from the 2002 Population and Housing census.

Variables used:

1. Proportion of adults who are illiterate.
2. Proportion of adults working in Agricultural sector.
3. Proportion of children not attending school full-time.
4. Proportion of dwellings not having piped water.
5. Proportion of dwellings not having W.C. linked to sewer.
6. Proportion of dwellings not having electricity.
7. Proportion of dwellings not having garbage collection service, or do not use compost, or burying.
8. Overcrowding.